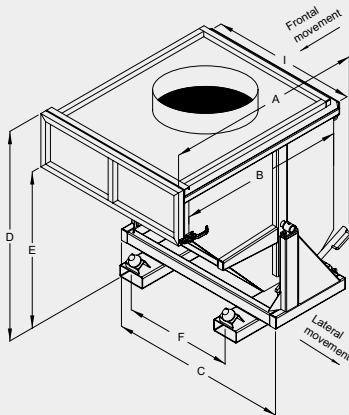


VACUUM-READY SKIP TIPPING VERSION

AS

Dust/chip collector for vacuum extractor.
Withstands up to 40 kPa.
Versatile connections.



CHARACTERISTICS

- Capacity : 550 to 1950 Litres
- Leakproof bin : 3 mm sheet metal with 4 mm non-deformable reinforcements
- Non-deformable bearing joints have grease nipples
- Safety latch for transport (disengage before tipping)
- Lever for manual tipping
- For specific connections, please contact us
- Fork sleeves can be modified on request.
Aperture : 170 x 70 mm.
Spacing : see F in table
- Safety chain included
- Pedestal-mounted models can be used with pallet trucks (between fork sleeves)
- Castor-mounted models have 2 fixed + 2 pivoting Ø160 mm castors and a handrail

Capacity litres	Load kg	Castors Ø	Movement	A	B	C	I	D	F	Fork sleeves ins.	Weight kg	Painted ref.
550	2000	-	-	1380	1200	1000	745	1325	740	170 x 70	305	ASP05000
550	1800	160 P	Fwd.	1380	1200	1000	745	1375	310	170 x 70	317	ASP05161
750	2000	-	-	1380	1200	1250	1000	1325	740	170 x 70	328	ASP08000
750	1800	160 P	Fwd.	1380	1200	1250	1000	1375	560	170 x 70	340	ASP08161
950	2500	-	-	1400	1220	1250	1000	1480	740	170 x 70	398	ASP11000
950	2400	160 C	Fwd.	1400	1220	1250	1000	1545	560	170 x 70	418	ASP11162
1450	2800	-	-	1400	1220	1750	1500	1480	900	170 x 70	510	ASP15000
1450	2400	160 C	Lat.	1400	1220	1750	1500	1545	900	170 x 70	530	ASP15162
1950	3000	-	-	1400	1220	2250	2000	1480	900	170 x 70	609	ASP20000
1950	2400	160 C	Lat.	1400	1220	2250	2000	1545	900	170 x 70	629	ASP20162

Castors : P= Alu/polyurethane, C=Cast iron/polyurethane. D : Overall height not including ferrule. Lat. : Lateral movement - Fwd. : Forward movement
Dimensions in mm for basic model (for guidance only)