

# BIG-BAG LOADER



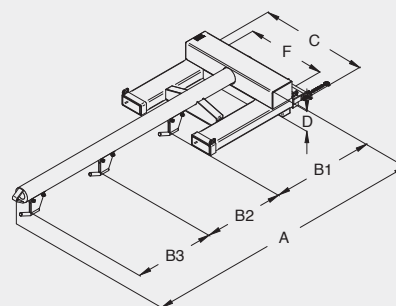
For transporting Big-Bags.  
Direct mounting on forks of forklift truck.  
Approved by an inspection body.

**ATTENTION** : Prior to use, accessory + forklift acceptance procedures must be carried out by your authorised inspection body.

## MODEL CS-A

With or without hooks versions

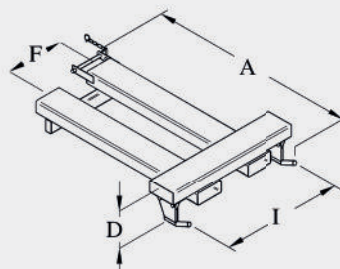
Bar ext. Ø : 118 mm  
Effective length : 1.70 m



## MODEL CS-F

Forward loading  
2 hooks

Load 2 x 1T



### CHARACTERISTICS

- Maximum load 2000 kg
- 1 Fork heel blocking device
- Fork sleeves aperture and spacing (F) can be modified on request
- For customised products, please contact us

#### Model CS-A

Nber hooks	Load kg	A	B1	B2	B3	C	D	F	Fork sleeves ins.	Weight kg	Painted ref.
0	2000	2520	Bar without hooks			950	235	700	170 x 70	227	CSP20000
2	2 x 1000	2520	955	1050	-	950	290	700	170 x 70	230	CSP22000
3	3 x 660	2520	780	700	700	950	290	700	170 x 70	235	CSP23000

Dimensions in mm for basic model (for guidance only).

#### Model CS-F

Load kg	A	I	D	F	Fork sleeves ins.	Weight kg	Painted ref.
2 x 1000	1370	800	250	380	170 x 70	77	CSP52000

Dimensions in mm for basic model (for guidance only).