

# SKIP FOR TELESCOPIC FORK-LIFT

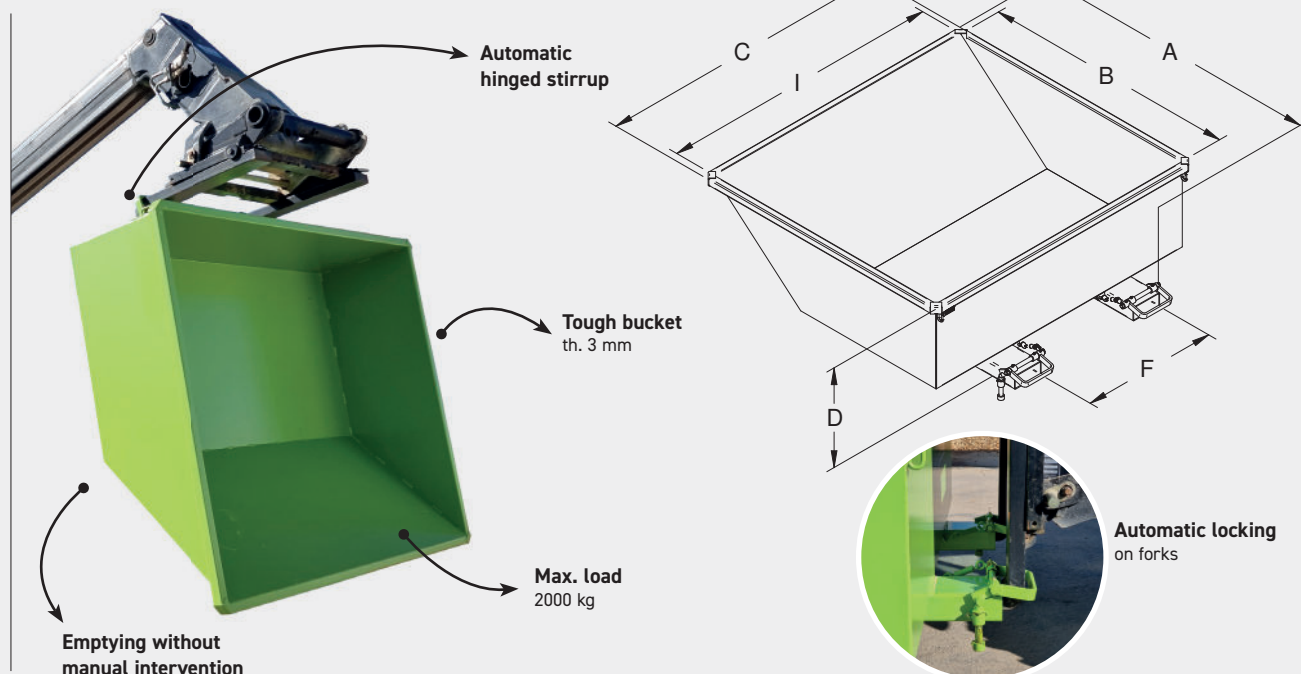


Dumping by simply tilting the forks

Reduced height

Automatic locking at the fork heels

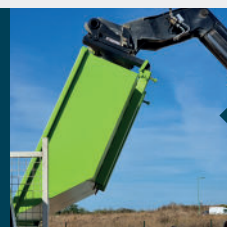
Suitable for low applications (demolition rubble, mortar, grape pomace under the press, waste under machines, etc.)



Dump position by tilting the forks



Working height 500 mm



Safe unloading

## SPECIFICATIONS

- Capacities 675 - 1000 - 1200 litres
- Folded 3mm sheet metal bucket
- Front chute for easy emptying
- Tilting by tilting the telescopic truck apron
- Automatic safety features at fork heels for ISO forks without hydraulic translator (thickness 50 mm maximum)
- No pallet truck passage
- Closed fork sleeves, truck connection and centre-distance (F) can be modified to order
- For safety reasons, it is forbidden to shake the bucket in the vertical position
- Options: Sealed body, crane hitching on 4 corner loop and galvanized version
- For made to measure - contact us

Capacity liters	Load kg	A	B	C	I	D	F	Fork sleeves inside section	Weight kg	Painted réf.
675	1500	1730	1494	1200	1120	590	800	170 x 70	145	BTP07000
1000	2000	1730	1494	1745	1660	590	800	170 x 70	175	BTP10000
1200	2000	1730	1494	2080	1995	590	800	170 x 70	193	BTP12000

Dimensions shown in mm excluding options and without engagement.