

# Facilitating your handling.

SKIPS

SHOVELS & BUCKETS

HOPPERS

ACCESSORIES

CUSTOM-MADE



# SHOVELS & BUCKETS

---

## SHOVELS & BUCKETS

<b>GB</b>	Big-bag filler bucket with hydraulic flap - 2T load .....	64-65
<b>GVL</b>	Hydraulic bulk bucket load 1.5 to 3T .....	63
<b>GVT</b>	Hydraulic bulk bucket load 1 to 1.5T .....	62
<b>PCH</b>	Loading shovel hydraulic tilting .....	61
<b>PCM</b>	Loading shovel mechanical tilting .....	60



# LOADING SHOVEL

## MECHANICAL TILTING

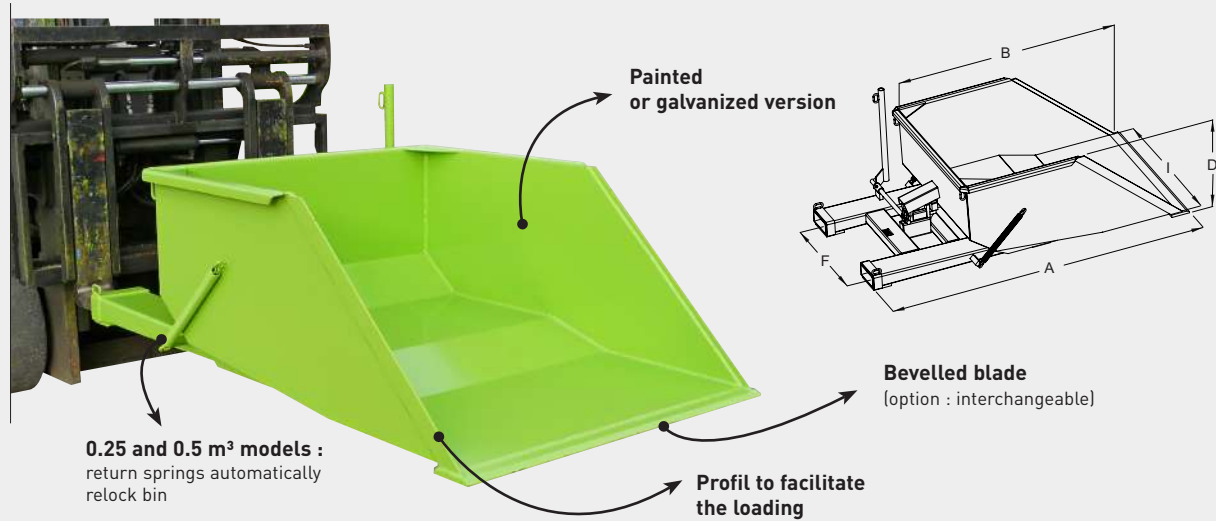


# LOADING SHOVEL

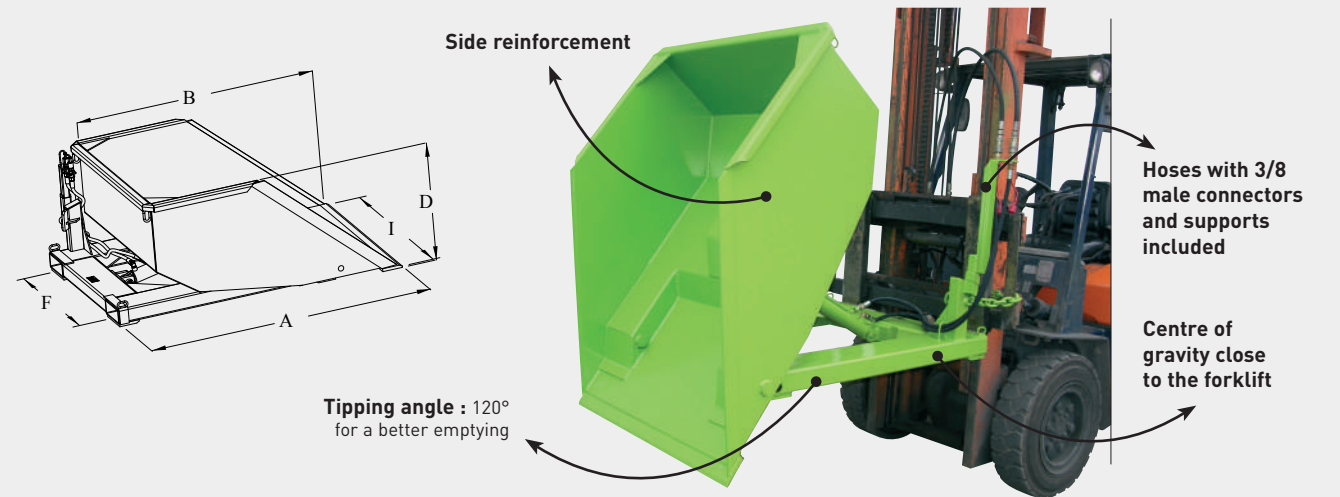
## HYDRAULIC TILTING



For use with forklift.  
Manual tipping.  
For loading bulk products from ground level.



For use with forklift.  
Hydraulic tipping.  
Comfort of use.  
For loading bulk products from ground level.



### CHARACTERISTICS

- Capacity 0.25 to 2.5 m<sup>3</sup>
- Flat bottom : 5 mm sheet metal (0.25 m<sup>3</sup> to 0.8 m<sup>3</sup> models) or 6 mm sheet metal (1.5 m<sup>3</sup> to 4 m<sup>3</sup> models)
- Bevelled blade, 400 HB, 15 mm sheet metal
- Welded band reinforces fork sleeves entry points
- Tipping angle : 120°
- Metal casing protects locking spring and hook
- Safety chain included

Capacity m <sup>3</sup>	Load kg	A	B	I	D	F	Fork sleeves ins.	Fork CDG	Weight kg	Painted ref.
0.25	1000	1720	1100	750	490	470	170 x 65	1060	168	PMP07502
0.5	1500	1940	1300	1000	560	700	170 x 65	1060	220	PMP10005
0.8	2000	1950	1300	1300	760	700	170 x 65	1060	270	PMP13010
1.5	2000	1950	1500	1500	800	900	170 x 65	1110	353	PMP15015
2	2500	1855	1500	2150	800	900	170 x 70	1050	445	PMP20020
2.5	2500	1855	1500	2150	1010	900	170 x 70	1030	470	PMP20025

Dimensions in mm for basic model (for guidance only).

### CHARACTERISTICS

- Capacity : 0.25 m<sup>3</sup> to 4 m<sup>3</sup>
- Flat bottom : 5 and 6 mm following capacities
- Bevelled blade, 400 HB, 15 mm sheet metal
- Hydraulic dumping : connect a double-acting cylinder to forklift (side shift carriage) 4 m<sup>3</sup> model has 2 cylinders
- Hoses with 3/8 male connectors and supports included

Capacity m <sup>3</sup>	Load kg	A	B	I	D	F	Fork sleeves ins.	Fork CDG	Weight kg	Painted ref.
0.25	1000	1590	1270	750	450	535	170 x 70	850	210	PHP07502
0.5	1500	1590	1300	1000	650	785	170 x 70	700	256	PHP10005
0.8	2000	1620	1300	1300	740	700	170 x 70	720	309	PHP13010
1.5	2000	1790	1500	1500	820	900	170 x 70	780	395	PHP15015
2	2500	1790	1500	2150	820	900	170 x 70	800	457	PHP20020
2.5	3000	1790	1500	2150	1020	900	170 x 70	780	488	PHP20025
3	3000	1880	1700	2150	1070	900	170 x 70	750	584	PHP20030
4	3500	1880	1700	2500	1220	1000	170 x 70	700	704	PHP25040

Dimensions in mm for basic model (for guidance only).

# HYDRAULIC BULK BUCKET

## LOAD 1 TO 1.5 T.



For use with forklift.  
For loading products (grain, chips, fertilisers, sand, etc.) from ground level.  
Capacity 0.25 to 1.1 m<sup>3</sup>



- ### CHARACTERISTICS
- Capacity 0.25 and 0.5 m<sup>3</sup>, tipping by 1 double-acting cylinder
  - Capacity from 0.8 to 1.1 m<sup>3</sup>, tipping by 2 double-acting cylinders
  - 5 mm heavy-duty scoop
  - Articulation joints have bearings and grease nipples
  - Hydraulic connection with 2 double-acting cylinders (hoses with 3/8 male connectors)
  - Safety chain included
  - Option interchangeable blade

Capacity m <sup>3</sup>	Load kg	Overall depth	Bin depth	Scoop width	Centre interior height	Center to center forks	Fork sleeves ins.	1200 fork CDG	Weight kg	Painted ref.
0.25	1000	1285	720	1130	340	700	170 x 70	1050	190	GNP02001
0.5	1000	1384	950	1240	510	700	170 x 70	1080	230	GNP05001
0.8	1500	1620	1230	1500	700	800	170 x 70	870	377	GNP08002
1	1500	1620	1230	1750	700	900	170 x 70	870	407	GNP10002
1.1	1500	1620	1230	2000	700	900	170 x 70	870	440	GNP11002

Dimensions in mm for basic model (for guidance only).

# HYDRAULIC BULK BUCKET

## LOAD 1.5 TO 3 T.



Direct lift on forks.  
Loading close to apron.  
U-shaped scoop - complete emptying.



- ### CHARACTERISTICS
- Capacity : 0.25 to 3 m<sup>3</sup>
  - 5 mm or 6 mm heavy-duty scoop
  - Articulation joints have bearings and grease nipples
  - Hydraulic dumping : connects 2 double-acting cylinders to forklift (side shift carriage)
  - Hoses with 3/8 male connectors and supports included
  - Option interchangeable blade

Capacity m <sup>3</sup>	Load kg	Overall depth	Bin depth	Scoop width	Centre interior height	Center to center forks	Fork sleeves ins.	1200 fork CDG	Weight kg	Painted ref.
0.25	1000	1500	770	1000	425	460	170 X 70	880	260	GLP02503
0.5	1500	1520	1000	1250	500	500	170 X 70	880	385	GLP05003
1.1	2000	1450	1260	1500	730	800	170 X 70	790	437	GLP11003
1.3	2000	1450	1260	1750	730	900	170 X 70	790	464	GLP13003
1.5	2000	1450	1260	2000	730	900	170 X 70	795	492	GLP15003
2	2500	1700	1590	2000	860	900	170 X 70	810	648	GLP20004
2.4	2500	1785	1700	2000	990	900	170 X 70	810	702	GLP24004
3	3000	1785	1700	2500	990	1000	170 X 70	815	783	GLP30004

Dimensions in mm for basic model (for guidance only).



Video demo

Yes, I recommend the GB bucket, it is very convenient and we save a lot of time... I have just filled 10 big-bags in 10 minutes!

# BIG-BAG FILLER BUCKET WITH HYDRAULIC FLAP - 2T LOAD



Direct lifting on forks.  
 Simultaneous material pick-up from the ground/floor and big-bag filling.  
 Certified by an approved body  
 Increased productivity and safety - Accurate and fast filling



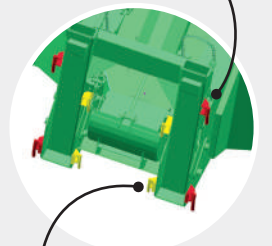
Filling productivity (10 big bags in 10 minutes)



Ideal for loading sand, gravel, cereals, aggregates, etc.

Precise dosing using the flap controlled directly from the forklift

4 exterior hooks for big-bag 1m<sup>3</sup>



4 interior hooks for big-bag 0.25 and 0.5 m<sup>3</sup>

**REGULATORY VERIFICATION:** Before use, check the adequacy between the lifting accessory, the fork-lift/crane and the use.

**RECOMMENDED FORKLIFT:** Capacity 4.5T - with 1200 mm max fork length / only 1 auxiliary hydraulic connection is needed

With the GB filler bucket, loading and conditioning in big-bags has never been so easy!



1. Loading



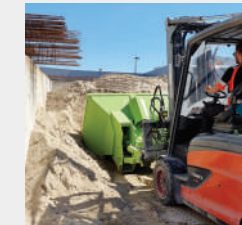
2. Conditioning



3. Handling

## SPECIFICATIONS

- Capacity 1430 litres for loading 1m<sup>3</sup> big-bags
- Pick-up width 2080 mm
- 2 x 100x50 double-acting cylinders for the loading function
- 1 x 40x25 double-acting cylinder for the cover opening function
- Automatic system for controlling the 2 functions via a single hydraulic connection
- Caution:** The 2 functions run one after the other without any dead time.
- 3/8" push-pull connection to accessory (hose to the fork-lift not supplied)
- Cover hatch 350 x 450 mm
- Locks on forks with 8 mm diameter lifting chains
- Removable counter blade
- 4 quick-release big-bag sling points
- 250 or 500 litre big-bag filling possible with optional kit
- Bag lifting MWL 2 T



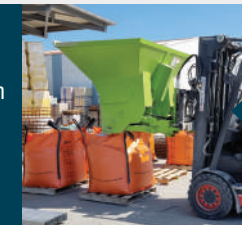
1- lower the bucket and fill it



2- raise the bucket, hook on the big-bag



3- operate the hatch to check the emptying



4- remove the big-bag and repeat the cycle

For loading big-bag of:			Load kg	Overall profile	Pick-up width	Overall height	Center distance	Fork sleeves inside section	Weight kg	Painted ref.
0,25 m <sup>3</sup>	0,5 m <sup>3</sup>	1 m <sup>3</sup>								
		x	2000	1800	2080	1550	900	188 x 88	780	GBP10000
x	x	x	2000	1800	2080	1550	900	188 x 88	800	GBP10001

Dimensions shown in mm excluding options and without engagement.

# OPTIONS

## OPTIONS FINISH/BLOCKING/RELEASE

### Finishing choice :

Stainless steel, galvanized version or customised paintwork



### Blocking on forks (BFP)



### Automatic release (DAP) :

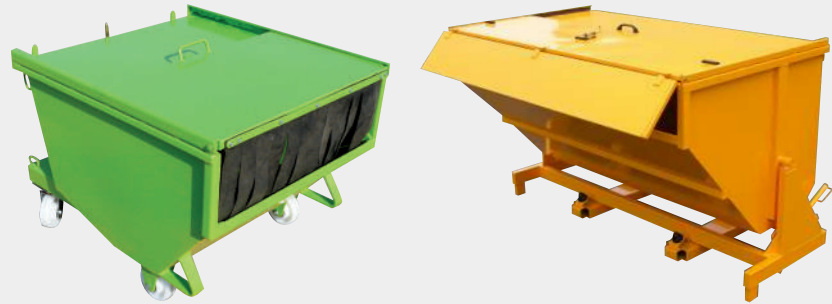
by pressure, by contact, by drawbar



# OPTIONS

## LIDS

**Sliding lid (CLP)**  
plastic strips or metal version



**Dead-light (OPP)**



**For stacker**



**Clamps hold on tipping bin**



**Clamps hold on drop bottom skip**



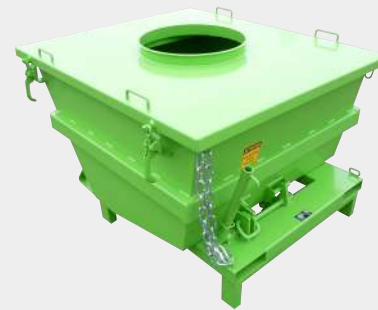
**Hinged two parts lid (COP)**



**Folding lid on BR**



**Custom removable lid (COS)**



**Guide flanges (FLP)**



**Fork sleeves on 3 sides (PTP)**



**Fixed lid with virole (CVP)**



**Articulated lid with 1 ferrule (VIP)**



**Special cover**  
Lockable, opening with gas compass



**Opening limiter (LOP)**



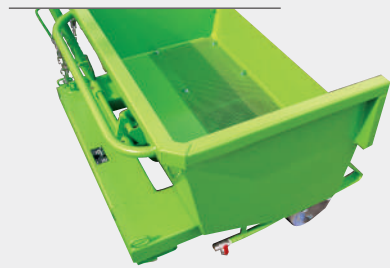
**Noise reduction coating**



# OPTIONS

# OPTIONS

**Grille and drain tap**  
(GRP)



**Leakproof door**  
with foam seal (FEP)



**Adhesive letters**  
(MAP)



**4 lifting lugs**  
(BAP)



**Security by screw**



**Draw bar hitching**  
(TRP10000)



**Tarpaulin or netting**  
(FBP)



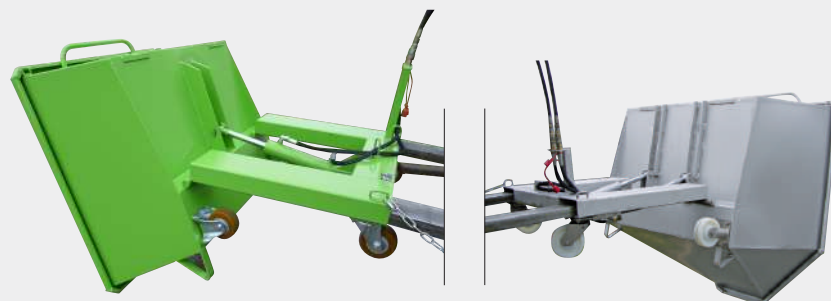
**Leakproof inspection window**  
on lid - (TEP)



**Deceleration cylinder**  
for end of tipping process (VRP)



**Hydraulic tipping**  
1 or 2 cylinders (BHP)



**Lid**

with aluminum roller shutter



**Customized leak-proof lid**  
with ferrule on tipping skip



**Cross fork sleeves**  
on FAP/CAP models (FVP)



**OTHER OPTIONS  
CONSULT US**



# CUSTOM MADE PRODUCTS

## CUSTOM MADE PRODUCTS



### — IMAGINE, INNOVATE, CREATE, GAIN YOUR TRUST...

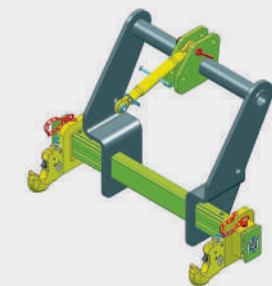
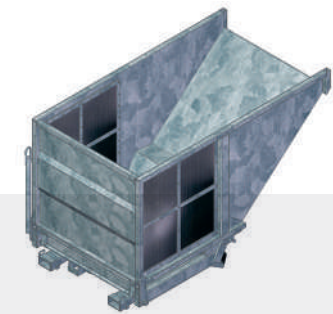
With **recognized know-how**, an ability to listen and professional expertise, we add to our wide range of standard products with tailor-made products to become your ideal partner and offer you :

- Unique expertise in the analysis of your requirements
- Personalised advice
- Solutions to each of your issues
- A proactive service
- Guaranteed quality, reliability and safety

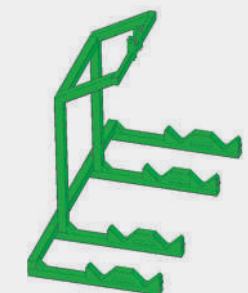
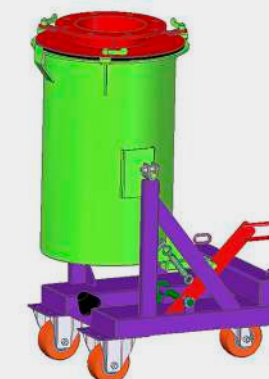
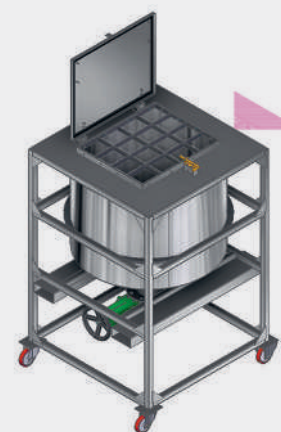
**Our design office works** every day to invent and develop products to provide you with solutions adapted to your requirements and the regulations (EC).

**The contract manager** is your contact with all the company's services. They guide you through the development of your project and answer all of your questions.

**Talk to us and benefit from our experience.**



**A tailor-made product designed to meet all your requirements !**



# CUSTOM MADE PRODUCTS

**Multi-compartment skip**  
Tilting or opening bottom



**Adaptation fork sleeves**  
For lift truck with clamps



**Skip**  
for machine environment



**Wire mesh version**



**Faggot mould**



**BR-C skip**  
with command of opening lid  
with pedal



**Special spur**



**Adaptation**  
with hinged tipping

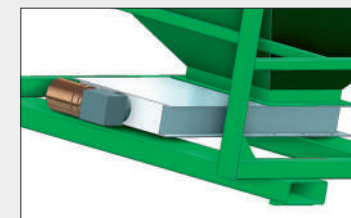


**Bin with opercule**  
or special glass hatch



**Specific adaptation**

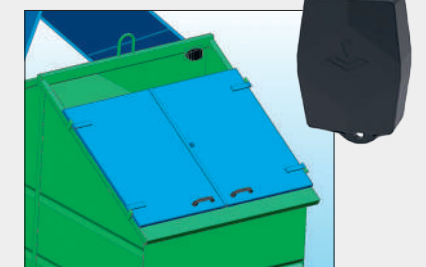
Geared motor



Hydraulic vibrator



GPS-plotter



# CUSTOM MADE PRODUCTS

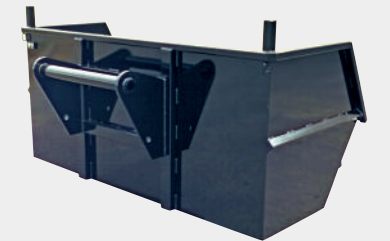
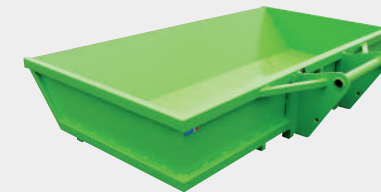
**Skip**  
with double-axle steering



**Mounting on specific wheels**  
For use with or without



**Special skip**  
for telescopic truck



**Truck**  
for fire equipment



**Truck**  
Handling



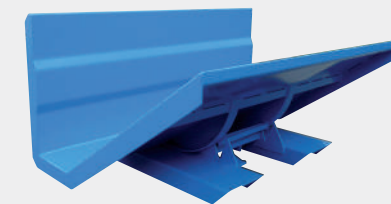
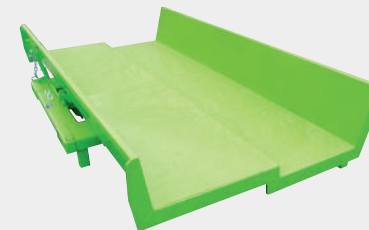
**Grab point**



**Open-bottom skip**  
with special lid



**Open sides**  
for long products



**Mobile ramp**  
special QL



# CUSTOM MADE PRODUCTS

**Reinforced skips**  
Steelworks / foundry / aspiration



**Hydraulic tilting**  
on tipping skip



**Retarder cylinder**



**Sloped bottom skip**  
special



## TELL US WHAT YOU NEED AND WE'LL MAKE THE SKIP TO FIT!



FOR A FREE ESTIMATE, PLEASE FILL IN THE FORM BELOW AND RETURN IT TO US.

Company : .....

Contact/Name : .....

Address : .....

Post code : ..... City : .....

Tel. : ..... Fax : ..... E-mail : .....

Sphere of activity : .....

### YOUR TECHNICAL REQUIREMENTS

Type of products handled : .....

Estimated load : .....

FINISH : Painted  galvanized  Stainless steel  Food-safe paint  Leak proof bin

TYPE : Pedestal-mounted model  Castor-mounted model  2 fixed + 2 pivoting  4 pivoting   
Forward movement  Lateral movement

For use with : Forklift  Stacker

Tipping system : Manual  Hydraulic

QUANTITY : .....

DESIRED OPTIONS AND/OR COMMENTS : .....

### DIMENSIONS REQUIRED

A (overall depth) : .....  
or

B (interior depth) : .....

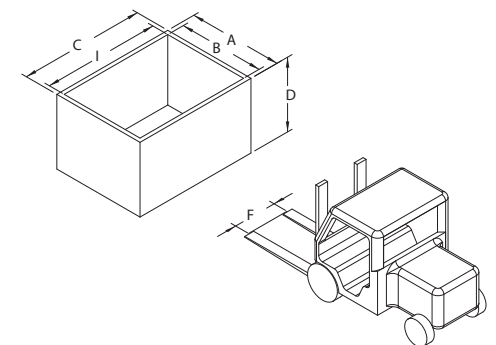
C (overall width) : .....

or  
I (interior width) : .....

D (overall height) : .....

F (fork sleeves spacing) : .....

Dimensions of your forks : ..... X .....



## NOTES

# ADD COLOUR TO YOUR WORKING ENVIRONMENT!

Our products are coated with a green polyurethane paint. As standard, we also offer the range of RAL colours below. Other RAL colours are available as an option so that our products can integrate seamlessly into your environment.



# To facilitate your work on the web

WEB SITE



Find our equipment on  
[www.goubard.fr](http://www.goubard.fr).



**Contact us.**

Z.A. de Suzerolle nord  
49140 Seiches-sur-le-Loir

**T. +33 (2) 41 76 36 52**  
**M. [export@goubard.fr](mailto:export@goubard.fr)**

VISIT CARD



Watch our demo  
videos on **Youtube.**

The trick ? Activate the bell  
to be alerted at every product release!

YOUTUBE

LINKEDIN



Follow our news  
on **LinkedIn.**

And log in to your sales  
executive if you wish.

Do you want to stop receiving the Goubard catalogue in paper format?  
Let us know, so that we only send you the link to the digital catalogue.